

CITY OF DANA POINT
AGENDA REPORT

Reviewed By:	
DH	X
CM	X
CA	X

DATE: JULY 20, 2021

TO: HONORABLE MAYOR AND CITY COUNCIL

FROM: CITY ATTORNEY

SUBJECT: REDISTRICTING PROCESS REQUIRED BY STATE LAW

RECOMMENDED ACTION:

That the City Council hold a public hearing regarding the state mandated redistricting process, pursuant to Elections Code sections 21607 and 21607.1.

BACKGROUND:

Following the results of each decennial census, the Elections Code requires the City to hold at least four public hearings, of which this is the second, to discuss the results of the census and its potential impact on the City's district voting map. (Elec. Code §§ 21607; 21607.1(a).)

DISCUSSION:

The Elections Code requires that two public hearings occur prior to draft maps preparation. Subsequently, two public hearings must occur after draft or proposed maps for redistricting are prepared. A variety of criteria exist for creating districts which generally speaking already apply to the City's existing districts. The criteria of most relevance to the current redistricting process will be the requirement that the population of each district is "balanced," meaning relatively the same.

Attached is a presentation from National Demographics Corporation (NDC) that outlines the redistricting process, which will be presented by Todd Tatum of NDC. The final results of the 2020 census are not available yet, but NDC will present data based on preliminary data. As will be explained, minimal changes, if any, to the City's districting maps are anticipated, as the population has not significantly changed since 2010. Once final census data is available, it will be possible to determine if the districts have become unbalanced and need to be adjusted. The census data is expected to be available in time for draft or proposed maps to be prepared in advance of the next public hearing planned for October. Public input at this time will be collected to be included in the preparation of draft or proposed maps.

FISCAL IMPACT:

There is no additional fiscal impact to this agenda item. The City Council approved the NDC Contract on March 16, 2021.

STRATEGIC PLAN IMPLEMENTATION:

Goal 2: Effective, Efficient and Innovative Government.

SUPPORTING DOCUMENTS:

- A. [NDC Power Point Presentation.....3](#)

Redistricting Process

Step	Description
Two Initial Hearings June 23 & July 20	Held prior to release of draft maps. Education and to solicit input on the communities in the Districts.
Census Data Release Mid/Late August	Census Bureau releases official 2020 Census population data.
California Data Release Early October 2021	California Statewide Database releases California’s official ‘prisoner-adjusted’ 2020 redistricting data.
Two Draft Map Hearings Oct. 19 & Feb. 15, 2022	Two Public Hearings to discuss and revise the draft maps and to discuss the election sequence.
Map Adoption By April 17, 2022	Final map must be posted at least 7 days prior to adoption. Map adopted via ordinance.*



*SB 594 would explicitly confirm maps may be adopted by resolution.

Redistricting Rules and Goals

1. Federal Laws

Equal Population
Federal Voting Rights Act
No Racial Gerrymandering



2. California Criteria for Cities (rank ordered)

1. Geographically contiguous
2. Undivided neighborhoods and “communities of interest”
(Socio-economic geographic areas that should be kept together)
3. Easily identifiable boundaries
4. Compact
(Do not bypass one group of people to get to a more distant group of people)

Prohibited:

“Shall not favor or discriminate against a political party.”

3. Other Traditional Redistricting Principles

Minimize voters shifted to different election years
Respect voters’ choices / continuity in office
Future population growth
Preserving the core of existing districts

Demographic Summary of Existing Districts

District		1	2	3	4	5	Total
2020	2020 Est. Total Pop	7,013	7,238	6,468	7,179	6,173	34,071
	Deviation from ideal	198	424	-346	364	-641	1,065
	% Deviation	2.91%	6.22%	-5.07%	5.35%	-9.41%	15.63%
2010 Total Pop	% Hisp	8%	15%	20%	28%	13%	17%
	% NH White	85%	78%	74%	66%	79%	76%
	% NH Black	1%	1%	1%	1%	1%	1%
	% Asian-American	5%	4%	4%	3%	4%	4%
Citizen Voting Age Pop	Total	5,973	5,492	5,138	5,183	5,336	27,122
	% Hisp	9%	14%	11%	14%	12%	12%
	% NH White	86%	78%	83%	78%	79%	81%
	% NH Black	0%	2%	2%	1%	3%	1%
	% Asian/Pac.Isl.	5%	6%	4%	6%	4%	5%

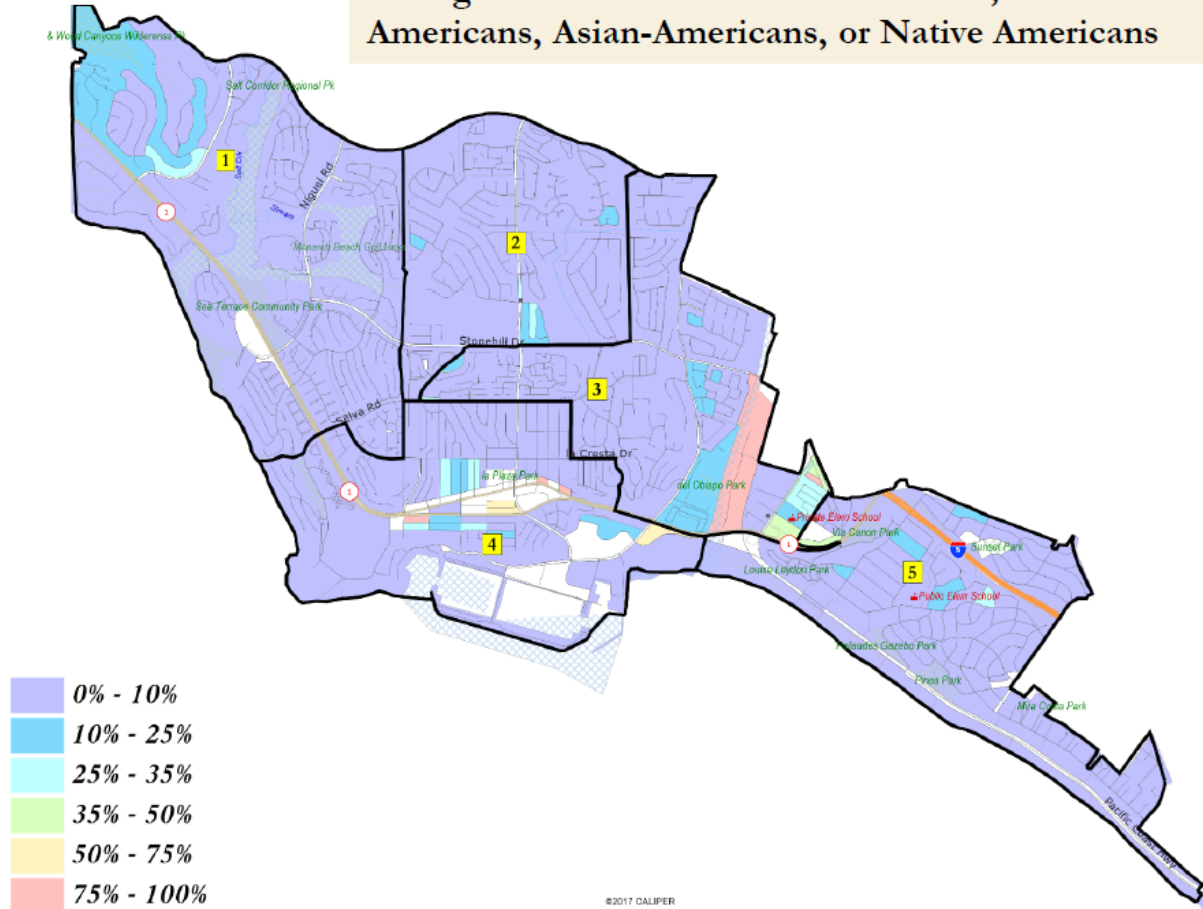
Estimates using official 2020 demographic data and NDC's estimated total population figures.

Each of the 5 districts must contain about 6,800 people.



Latino CVAP

No significant concentration of Latinos, African-Americans, Asian-Americans, or Native Americans



Defining Neighborhoods

1st Question: What is your neighborhood?

2nd Question: What are its geographic boundaries?

Examples of physical features defining a neighborhood boundary:

- Natural neighborhood dividing lines, such as highway or major roads, rivers, canals and/or hills
- Areas around parks or schools
- Other neighborhood landmarks

In the absence of public testimony, planning records and other similar documents may provide definition.



Beyond Neighborhoods: Defining Communities of Interest

1st Question: What defines your community?

- Geographic Area, plus
- Shared issue or characteristic
 - Shared social or economic interest
 - Impacted by county policies
- Tell us “your community’s story”

2nd Question: Would this community benefit from being “included within a single district for purposes of its effective and fair representation”?

- Or would it benefit more from having multiple representatives?

Definitions of Communities of Interest may not include relationships with political parties, incumbents, or political candidates.

Beyond Neighborhoods: Communities

Under the California Elections Code, “community of interest” has a very specific definition in the context of districting and redistricting cities and counties:

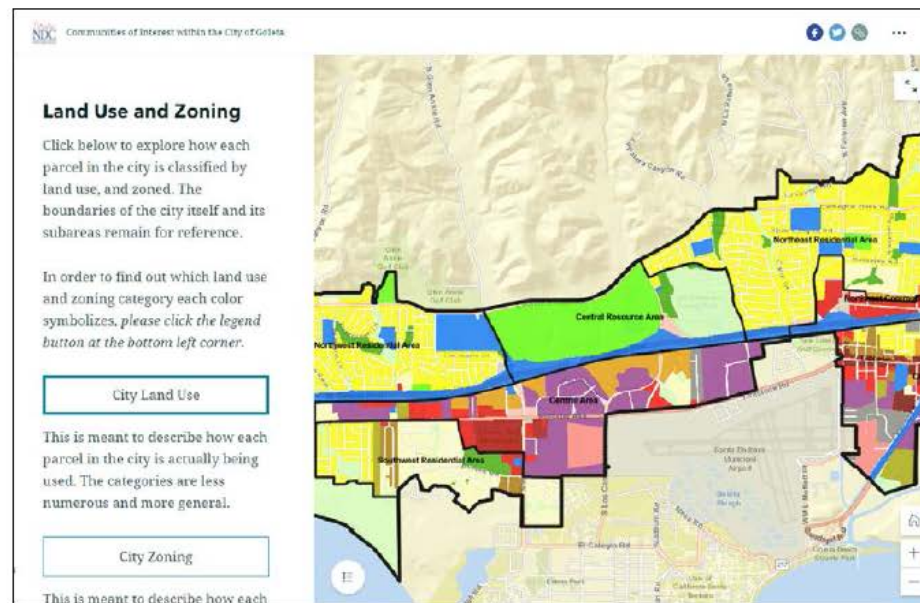
A “community of interest” is a population that shares common social or economic interests that should be included within a single district for purposes of its effective and fair representation.

Communities of interest do not include relationships with political parties, incumbents, or political candidates.

(emphasis added)

Story Map

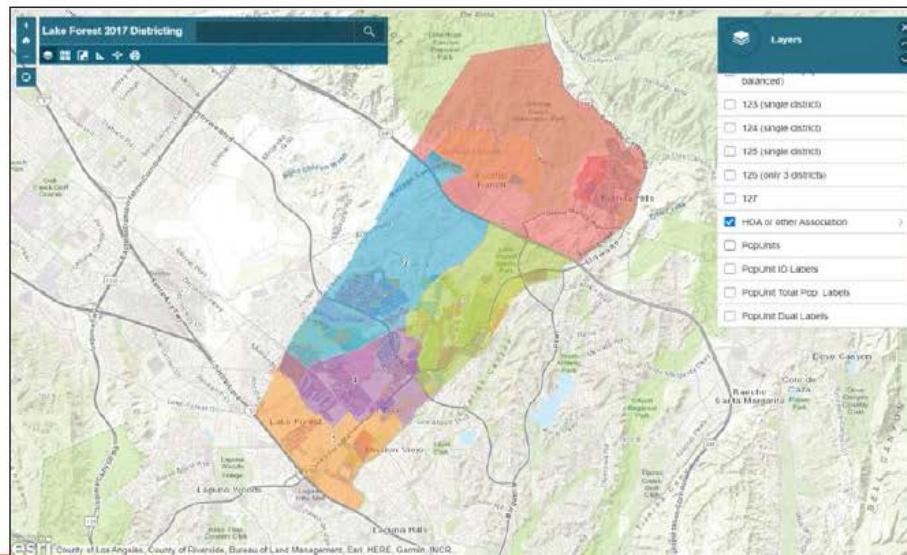
- ❑ Easy to use “story” of demographic and other data
 - ❑ Similar to PowerPoint, but interactive
 - ❑ Used to identify “communities of interest”
 - ❑ Sample map from Goleta



Simple Map Review Tool

Online Interactive Review Map

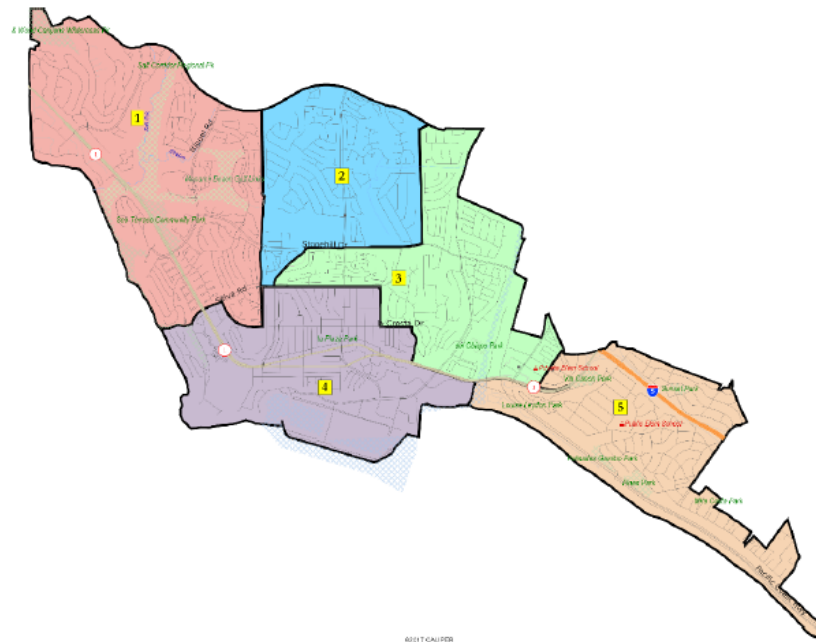
- ESRI's "ArcGIS Online" – similar to Google Maps in ease of use
- Used to review, analyze and compare maps, not to create them
- Includes overlays of "community of interest" and other data



Public Hearing & Discussion

What is your neighborhood and what are its boundaries?

What other notable areas are in the City, and what are their boundaries?



Share Your Thoughts

Website

bit.ly/DPDistricting

Phone

949.248.3500

Email

comment@danapoint.org

SUBJECT: Districting

