

City of Dana Point

Introduction to Redistricting 2021

6/23/2021

Justin Levitt, PhD, Vice-President
National Demographics Corporation

Redistricting Process

Step	Description
Two Initial Hearings June 23 & July 20	Held prior to release of draft maps. Education and to solicit input on the communities in the Districts.
Census Data Release Mid/Late August	Census Bureau releases official 2020 Census population data.
California Data Release Early October 2021	California Statewide Database releases California's official 'prisoner-adjusted' 2020 redistricting data.
Two Draft Map Hearings Oct. 19 & Feb. 15, 2022	Two Public Hearings to discuss and revise the draft maps and to discuss the election sequence.
Map Adoption By April 17, 2022	Final map must be posted at least 7 days prior to adoption. Map adopted via ordinance.*

Redistricting Rules and Goals

1. Federal Laws

Equal Population
Federal Voting Rights Act
No Racial Gerrymandering



2. California Criteria for Cities (rank ordered)

1. Geographically contiguous
2. Undivided neighborhoods and “communities of interest”
(Socio-economic geographic areas that should be kept together)
3. Easily identifiable boundaries
4. Compact
(Do not bypass one group of people to get to a more distant group of people)

Prohibited:

“Shall not favor or discriminate against a political party.”

3. Other Traditional Redistricting Principles

Minimize voters shifted to different election years
Respect voters’ choices / continuity in office
Future population growth
Preserving the core of existing districts

Demographic Summary of Existing Districts

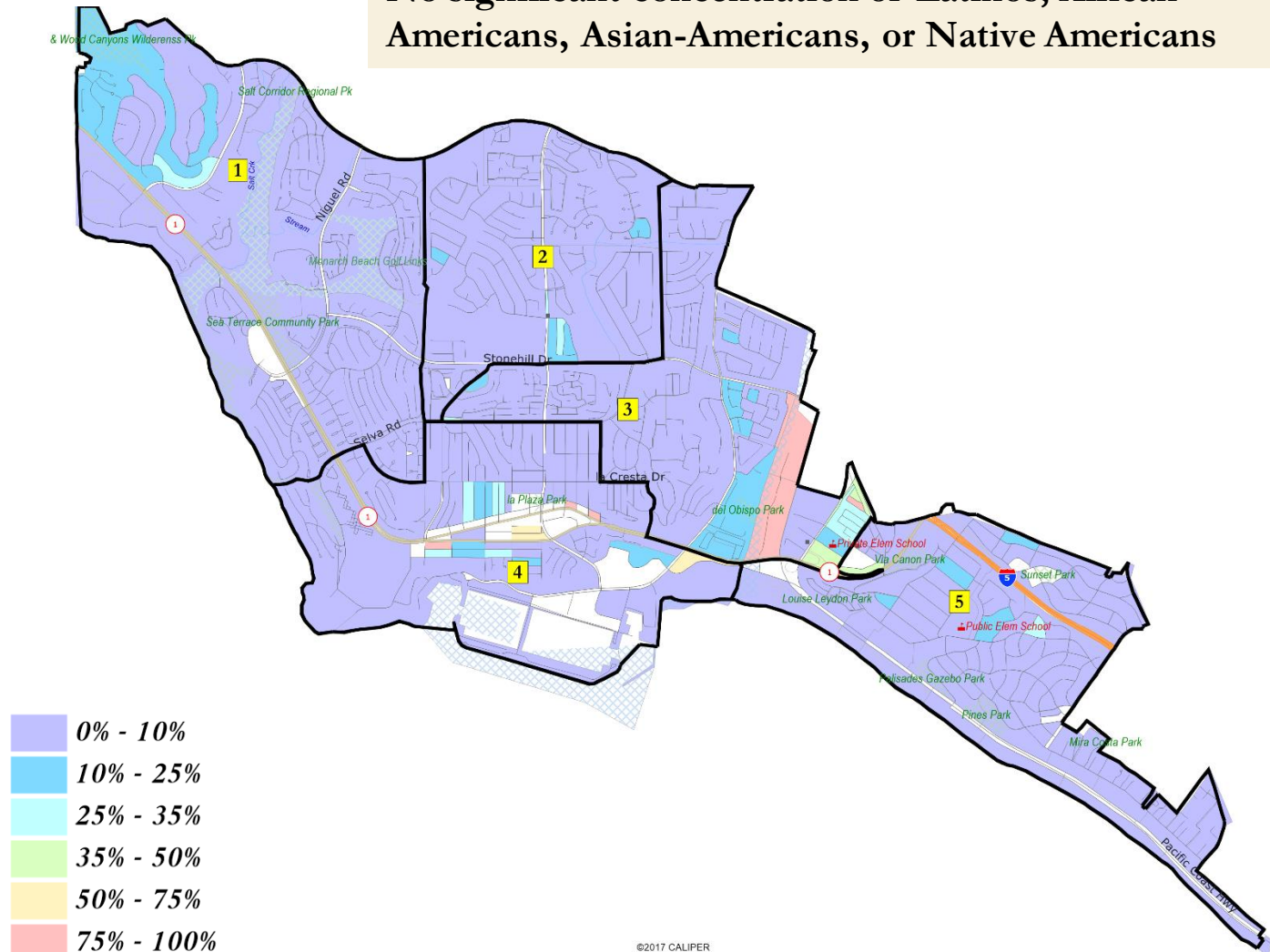
District		1	2	3	4	5	Total
2020	2020 Est. Total Pop	7,013	7,238	6,468	7,179	6,173	34,071
	Deviation from ideal	198	424	-346	364	-641	1,065
	% Deviation	2.91%	6.22%	-5.07%	5.35%	-9.41%	15.63%
2010 Total Pop	% Hisp	8%	15%	20%	28%	13%	17%
	% NH White	85%	78%	74%	66%	79%	76%
	% NH Black	1%	1%	1%	1%	1%	1%
	% Asian-American	5%	4%	4%	3%	4%	4%
Citizen Voting Age Pop	Total	5,973	5,492	5,138	5,183	5,336	27,122
	% Hisp	9%	14%	11%	14%	12%	12%
	% NH White	86%	78%	83%	78%	79%	81%
	% NH Black	0%	2%	2%	1%	3%	1%
	% Asian/PacIsl.	5%	6%	4%	6%	4%	5%

Estimates using official 2020 demographic data and NDC's estimated total population figures.

Each of the 5 districts must contain about 6,800 people.

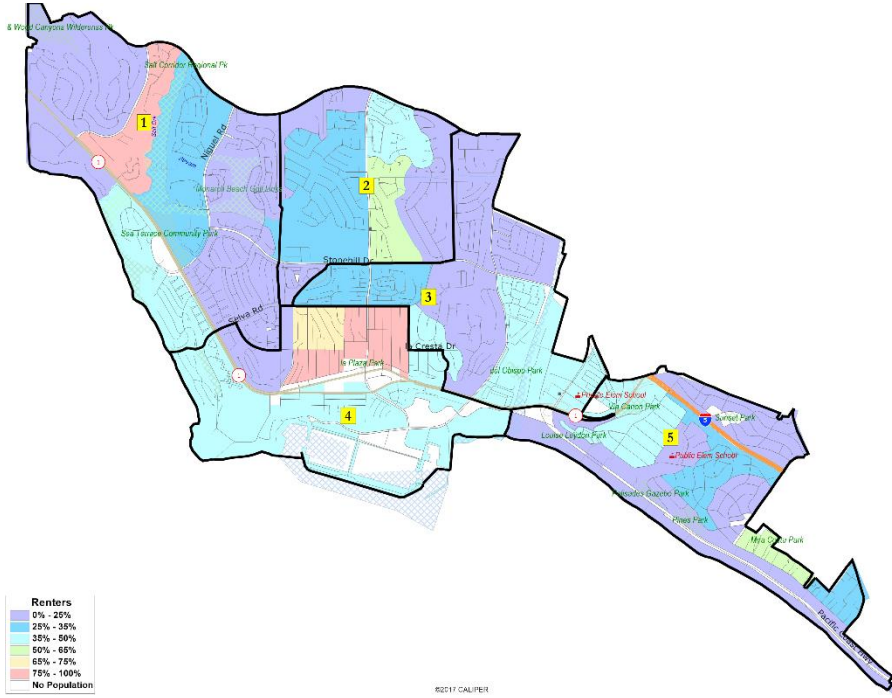
Latino CVAP

No significant concentration of Latinos, African-Americans, Asian-Americans, or Native Americans

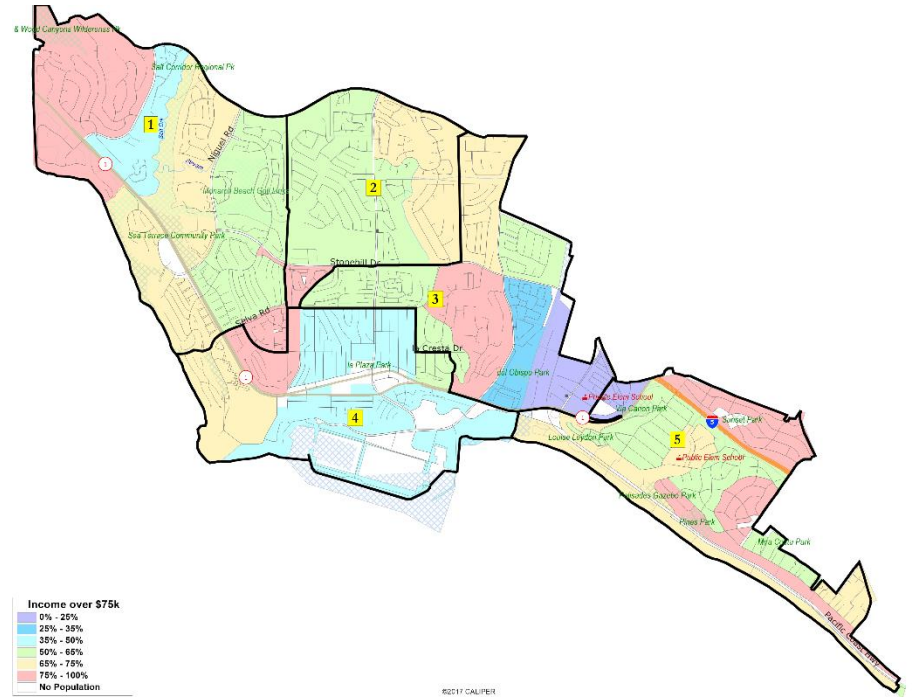


©2017 CALIPER

Other Socio-Economic Demographics



Percent Renters



Income over \$75k

Defining Neighborhoods

1st Question: What is your neighborhood?

2nd Question: What are its geographic boundaries?

Examples of physical features defining a neighborhood boundary:

- Natural neighborhood dividing lines, such as highway or major roads, rivers, canals and/or hills
- Areas around parks or schools
- Other neighborhood landmarks

In the absence of public testimony, planning records and other similar documents may provide definition.



Beyond Neighborhoods: Defining Communities of Interest

1st Question: What defines your community?

- Geographic Area, plus
- Shared issue or characteristic
 - Shared social or economic interest
 - Impacted by county policies
- Tell us “your community’s story”

2nd Question: Would this community benefit from being “included within a single district for purposes of its effective and fair representation”?

- Or would it benefit more from having multiple representatives?

Definitions of Communities of Interest may not include relationships with political parties, incumbents, or political candidates.

Beyond Neighborhoods: Communities

Under the California Elections Code, “community of interest” has a very specific definition in the context of districting and redistricting cities and counties:

A “community of interest” is a population that shares common social or economic interests **that should be included within a single district for purposes of its effective and fair representation.**

Communities of interest do not include relationships with political parties, incumbents, or political candidates.

(emphasis added)

Possible Neighborhoods / Communities

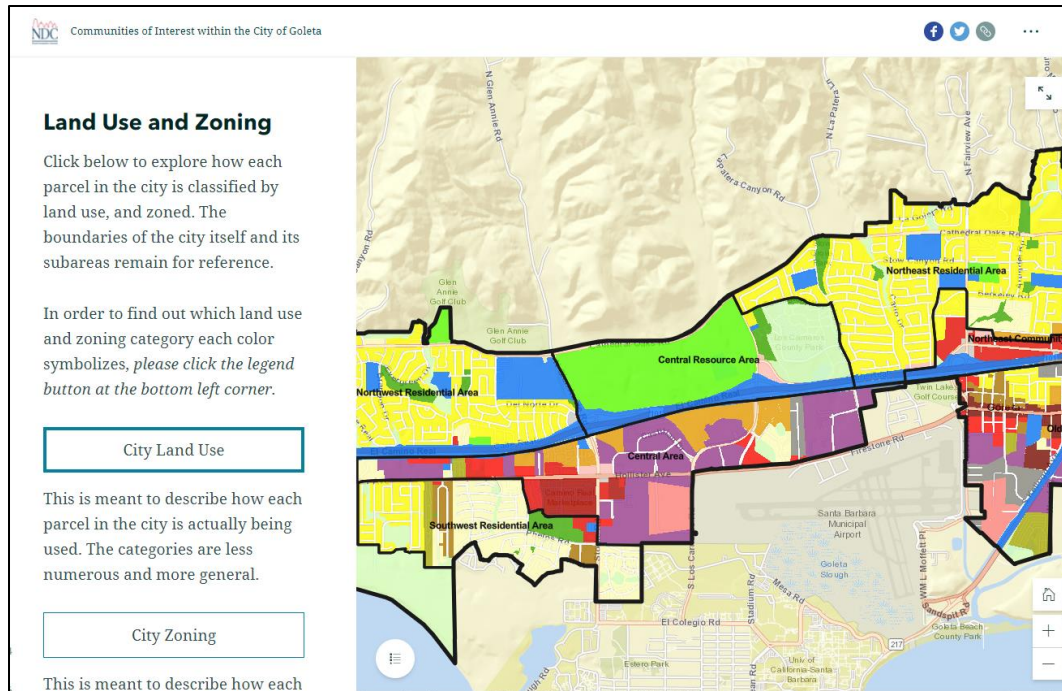


City of Dana Point 33282 Golden Lantern Street | 949.248.3500 | www.danapoint.org



Story Map

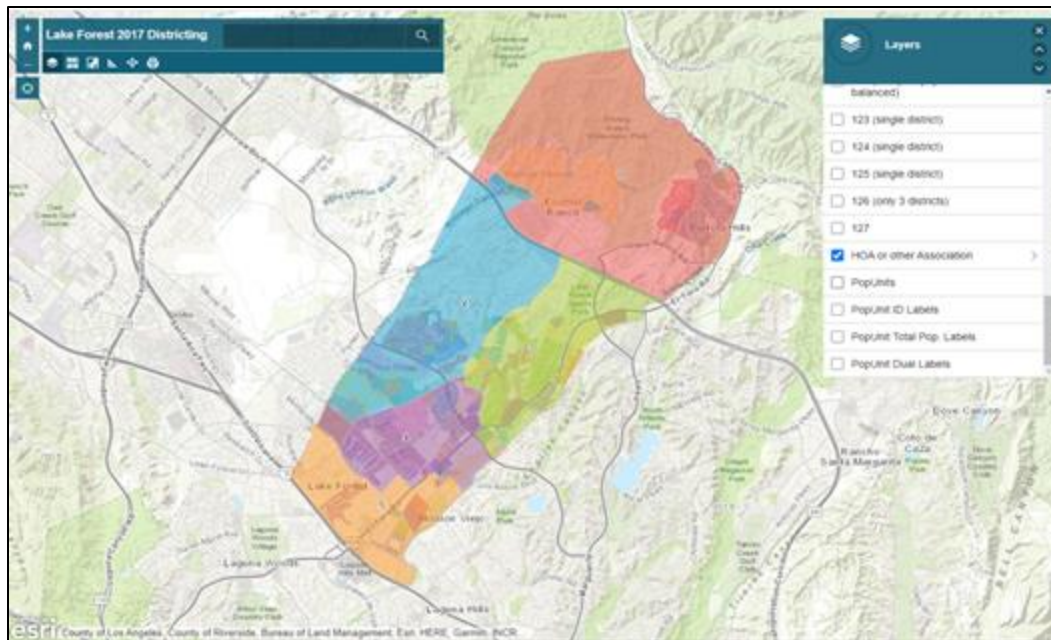
- Easy to use “story” of demographic and other data
 - Similar to PowerPoint, but interactive
 - Used to identify “communities of interest”
 - Sample map from Goleta



Simple Map Review Tool

Online Interactive Review Map

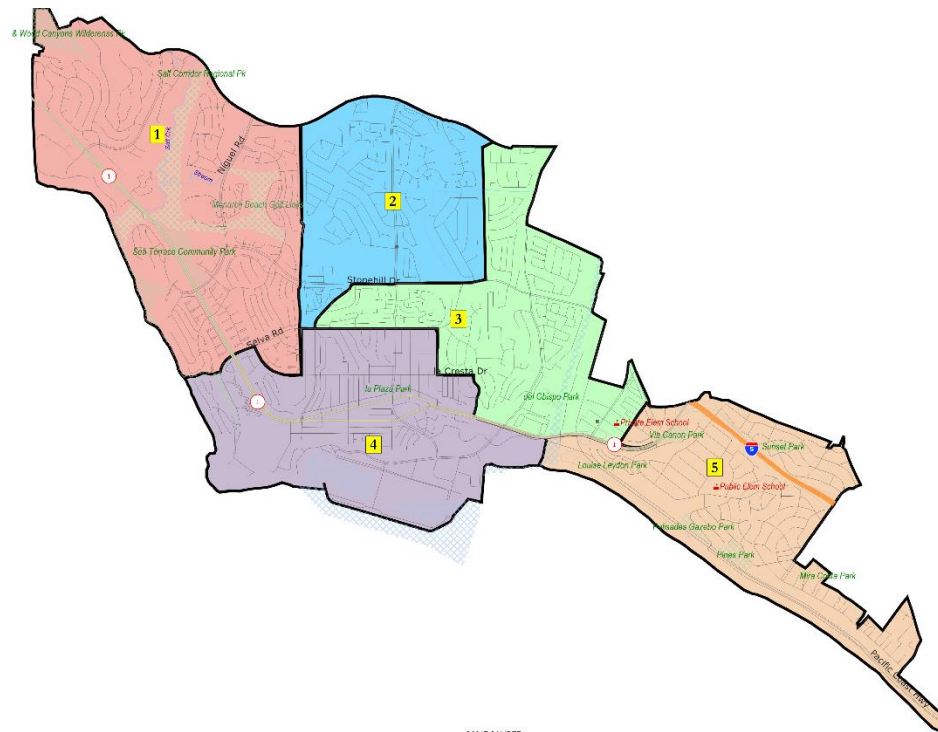
- ESRI's "ArcGIS Online" – similar to Google Maps in ease of use
- Used to review, analyze and compare maps, not to create them
- Includes overlays of "community of interest" and other data



Public Hearing & Discussion

What is your neighborhood and what are its boundaries?

What other notable areas are in the City, and what are their boundaries?



©2017 CALIPER

Share Your Thoughts

Website

bit.ly/DPDistricting

Phone

949.248.3500

Email

comment@danapoint.org

SUBJECT: Districting